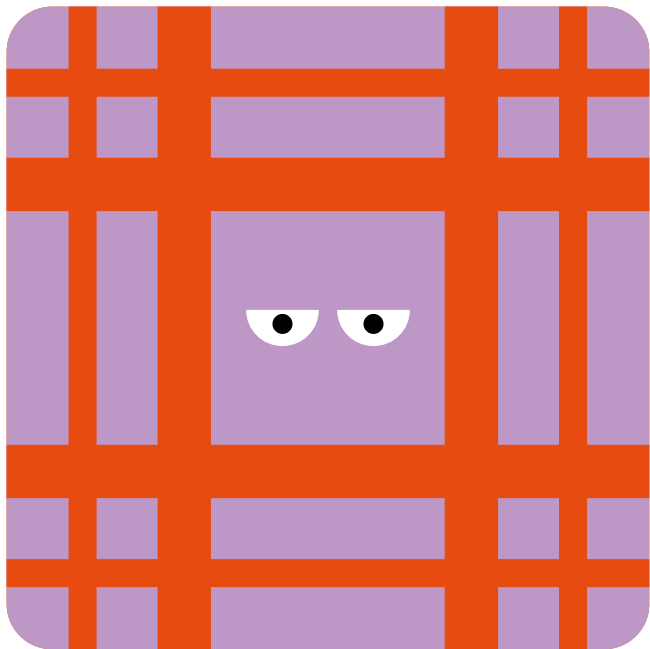




# The framing

What is the subject of the photo ?

Where is it in the photo ?



# Wide

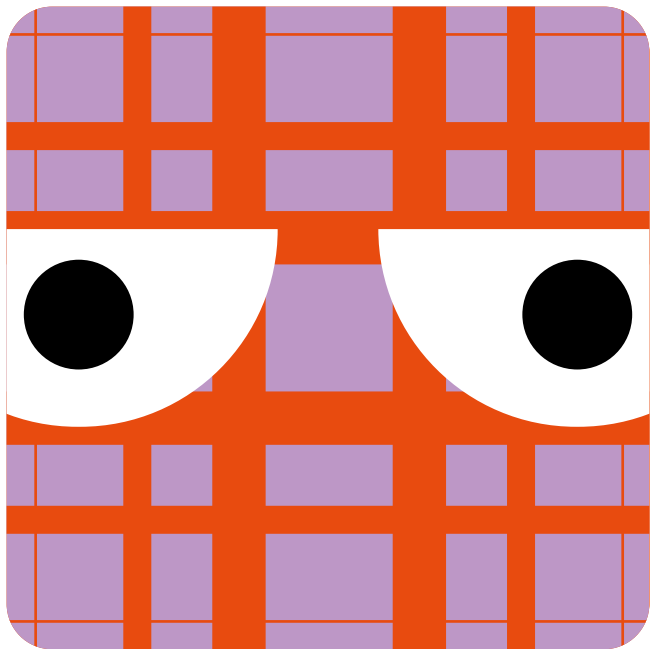
The subject is taken in its environment



# The framing

What is the subject of the photo ?

Where is it in the photo ?



# Close

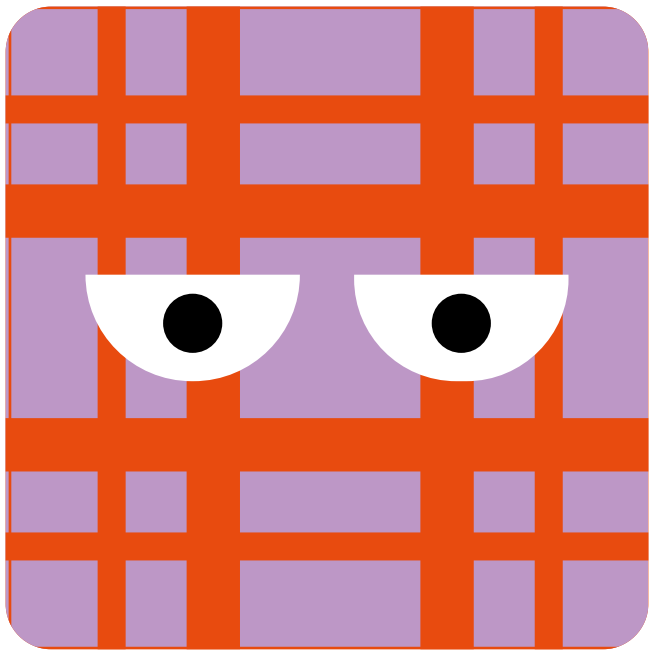
Close up / Zoom in



# The framing

What is the subject of the photo ?

Where is it in the photo ?



## In the center

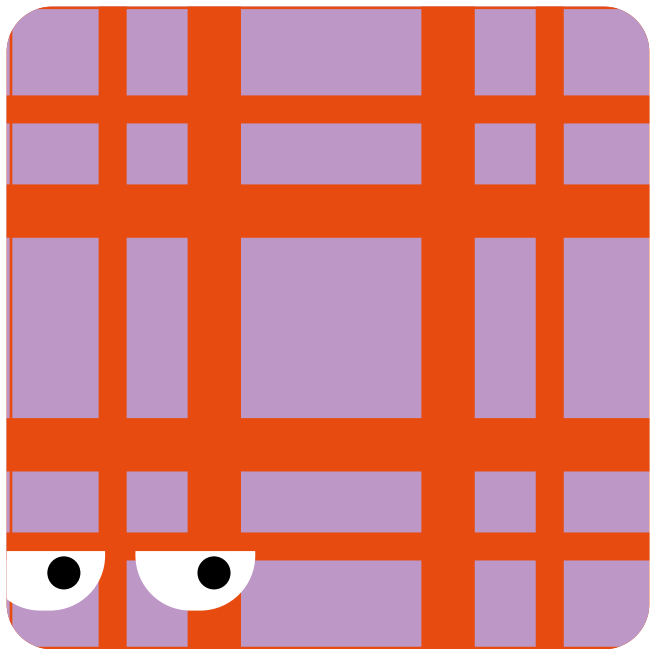
The subject is in the center of the picture



# The framing

What is the subject of the photo ?

Where is it in the photo ?



# Not in the center

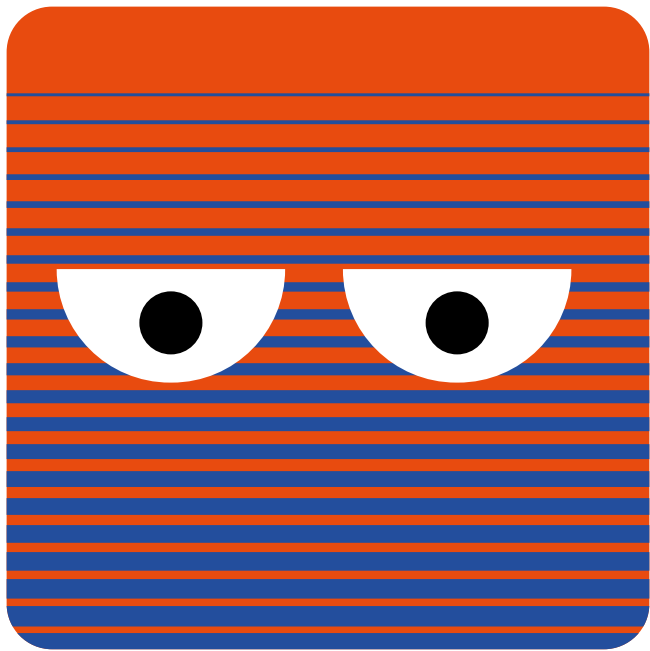
The subject is not in the center  
of the picture





# The point of view

From where did the photographer take the photograph ?



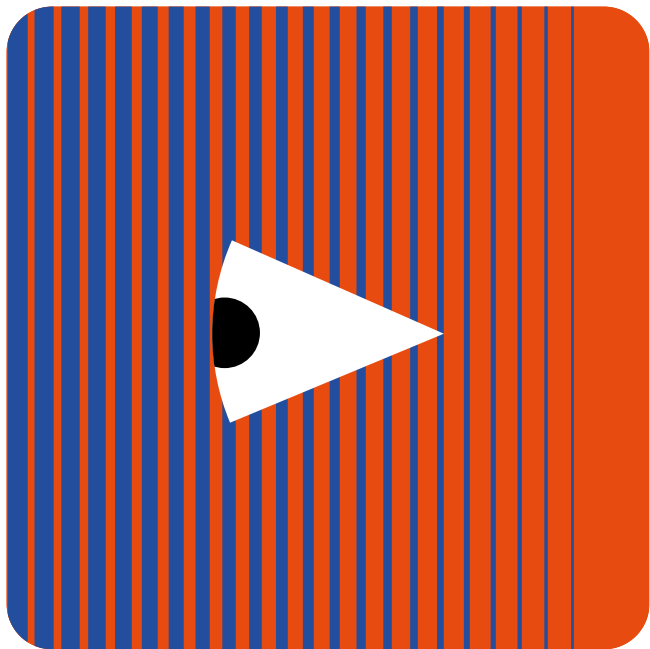
# Frontal

The photo is taken in  
front of the subject



# The point of view

From where did the photographer take the photograph ?



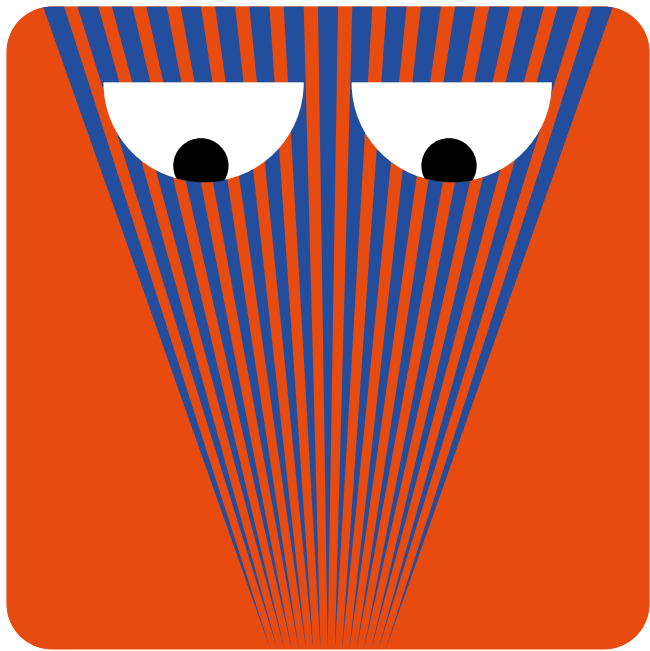
## Side view

The photo is taken from the side



# The point of view

From where did the photographer take the photograph ?



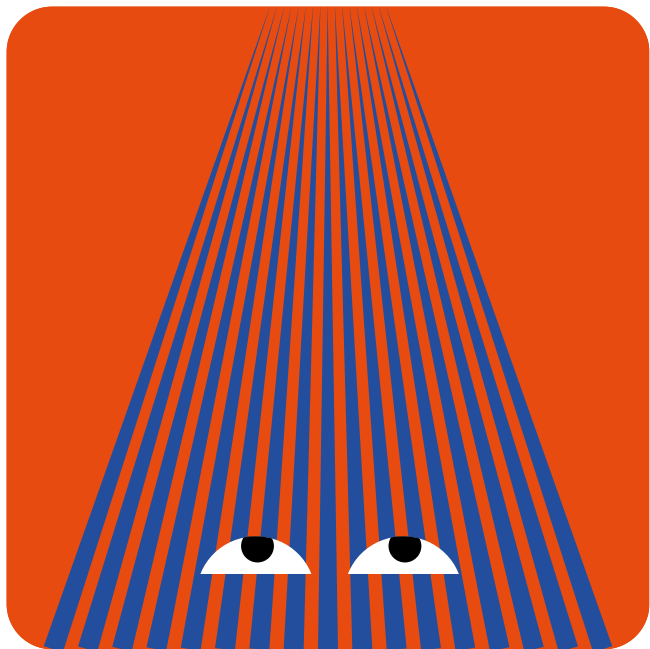
# From above

The photo is taken from above



# The point of view

From where did the photographer take the photograph ?



# From below

The photo is taken from below

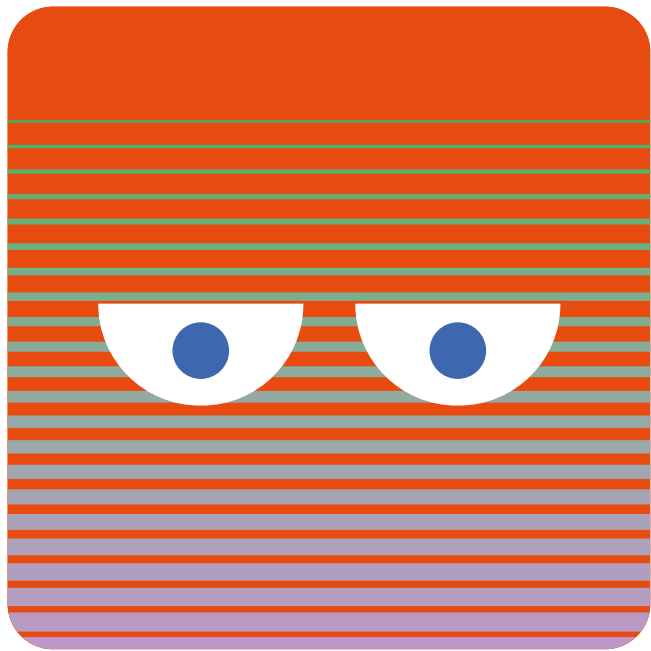




# Technical and aesthetic choices

What are the photographer's artistic choices ?

What effect does it produce ?



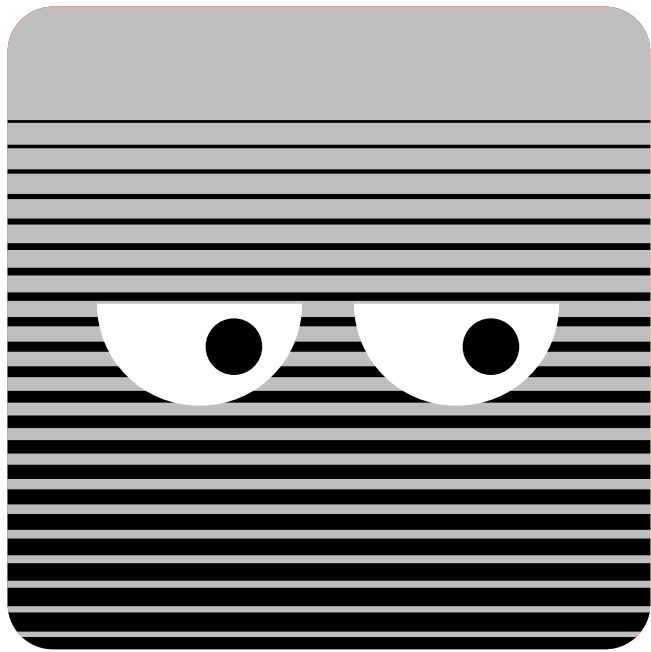
**Color**



# Technical and aesthetic choices

What are the photographer's artistic choices ?

What effect does it produce ?



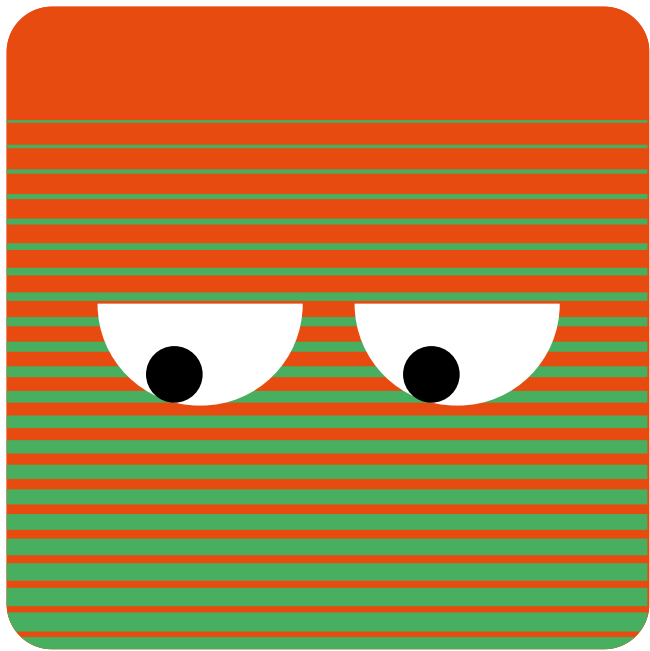
**Black and white**



# Technical and aesthetic choices

What are the photographer's artistic choices ?

What effect does it produce ?



# Sharp

The picture is clear and in focus



# Technical and aesthetic choices

What are the photographer's artistic choices ?

What effect does it produce ?



# Out of focus

The picture is blurry and  
some parts are not clear





# The light

Where does the light come from ?

What is the light intensity ?



# Natural

The photo is taken in daylight



# The light

Where does the light come from ?

What is the light intensity ?



# Artificial

Lighting with lamps



# Photography style

Where was the photo taken ?

What effects did the  
photographer want to create ?



# Candid shot

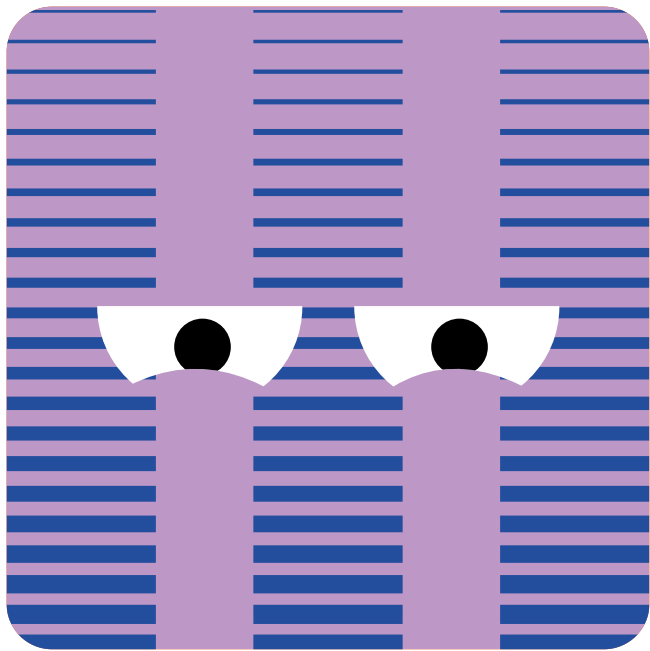
A photo captured spontaneously  
and naturally.



# Photography style

Where was the photo taken ?

What effects did the  
photographer want to create ?



# Staged photo

The photographer carefully planned the shot in advance.





# Emotions

What emotions is the  
photographer trying to convey ?



**Joy**



# Emotions

What emotions is the  
photographer trying to convey ?

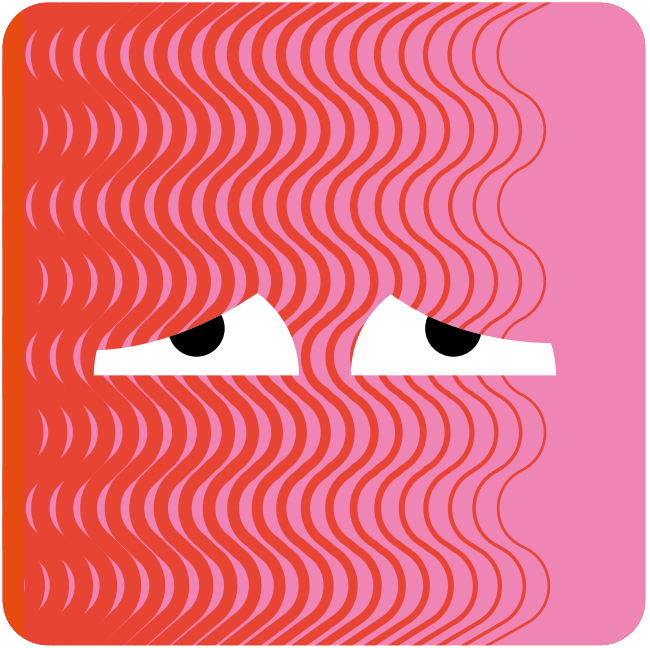


**Anger**



# Emotions

What emotions is the  
photographer trying to convey ?



**Sadness**



# Emotions

What emotions is the  
photographer trying to convey ?



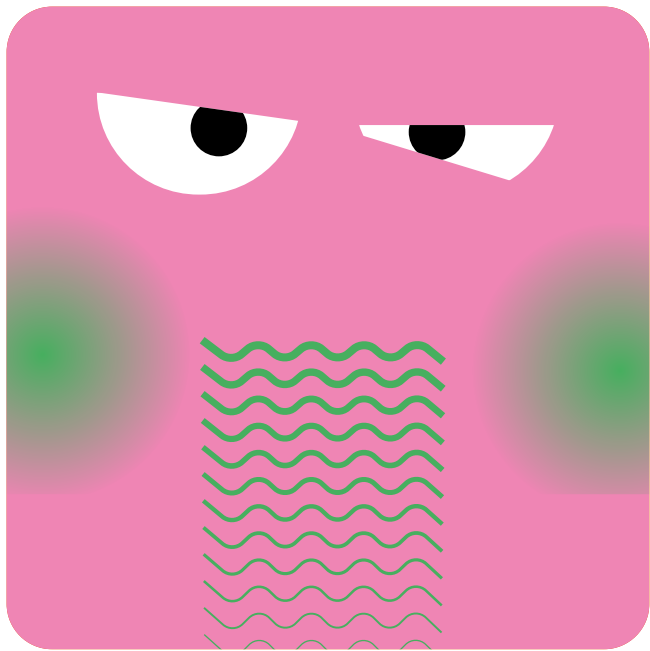
**Surprise**





# Emotions

What emotions is the  
photographer trying to convey ?

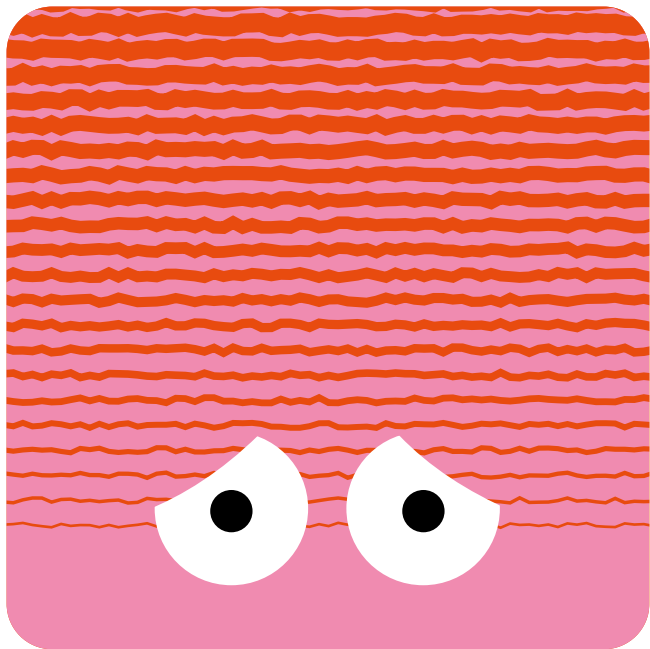


**Disgust**




# Emotions

What emotions is the  
photographer trying to convey ?



**Fear**




# The photographer's intention

What message is the photographer trying to convey ?

What is his intention ?



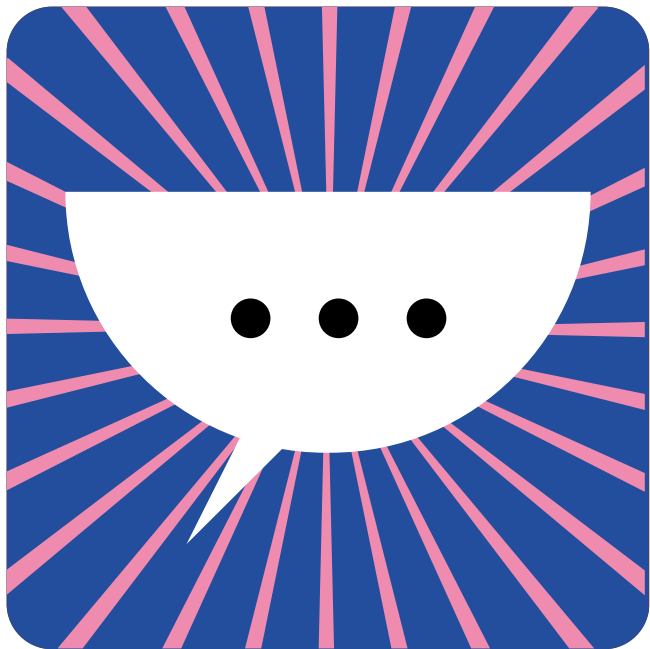
**To entertain**



# The photographer's intention


What message is the photographer trying to convey ?

What is his intention ?



**To tell a story**






# The photographer's intention

What message is the photographer trying to convey ?

What is his intention ?



**To mislead**




# The photographer's intention

What message is the photographer trying to convey ?

What is his intention ?



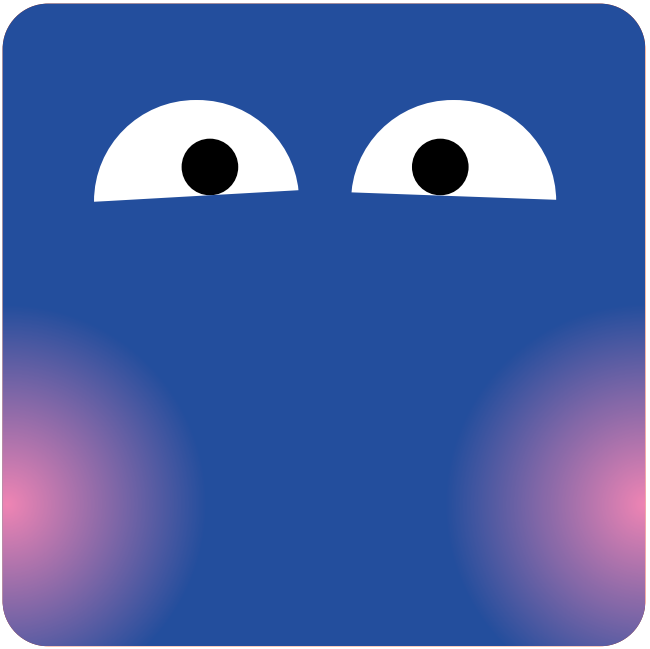
**To denounce**




# The photographer's intention

What message is the photographer trying to convey ?

What is his intention ?



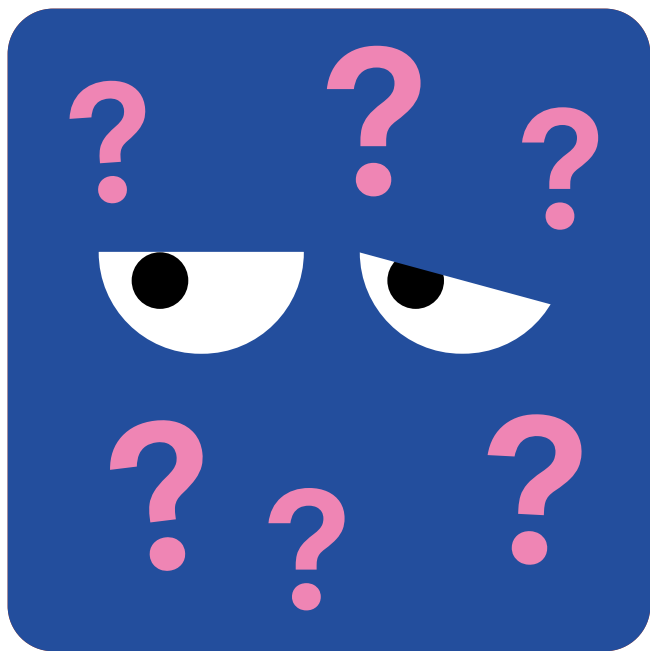
**To move**



# The photographer's intention


What message is the photographer trying to convey ?

What is his intention ?



**To question**






# The photographer's intention

What message is the photographer trying to convey ?

What is his intention ?



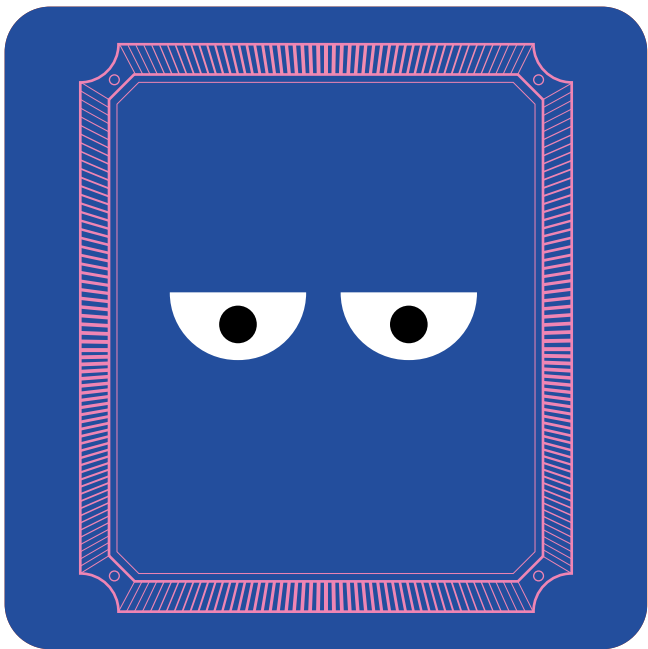
**To beautify**




# The photographer's intention

What message is the photographer trying to convey ?

What is his intention ?



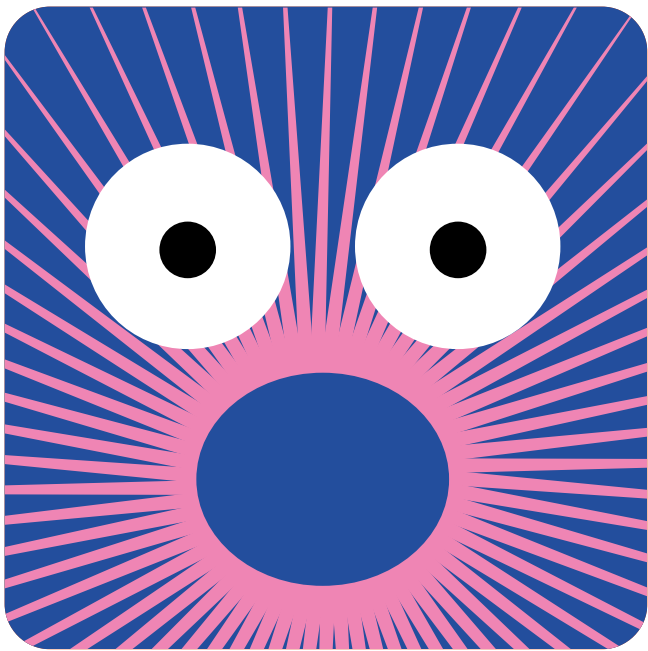
**To depict**




# The photographer's intention

What message is the photographer trying to convey ?

What is his intention ?



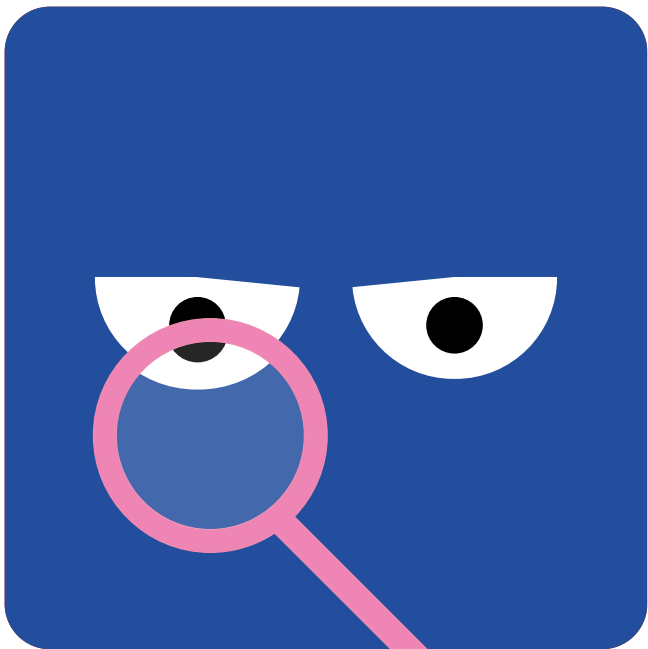
**To surprise**



# The photographer's intention


What message is the photographer trying to convey ?

What is his intention ?



**To explore**

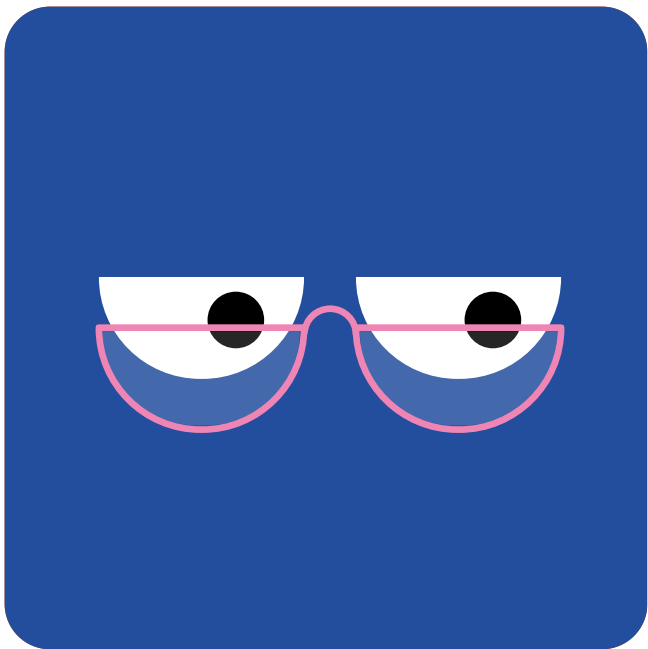




# The photographer's intention

What message is the photographer trying to convey ?

What is his intention ?



**To document**